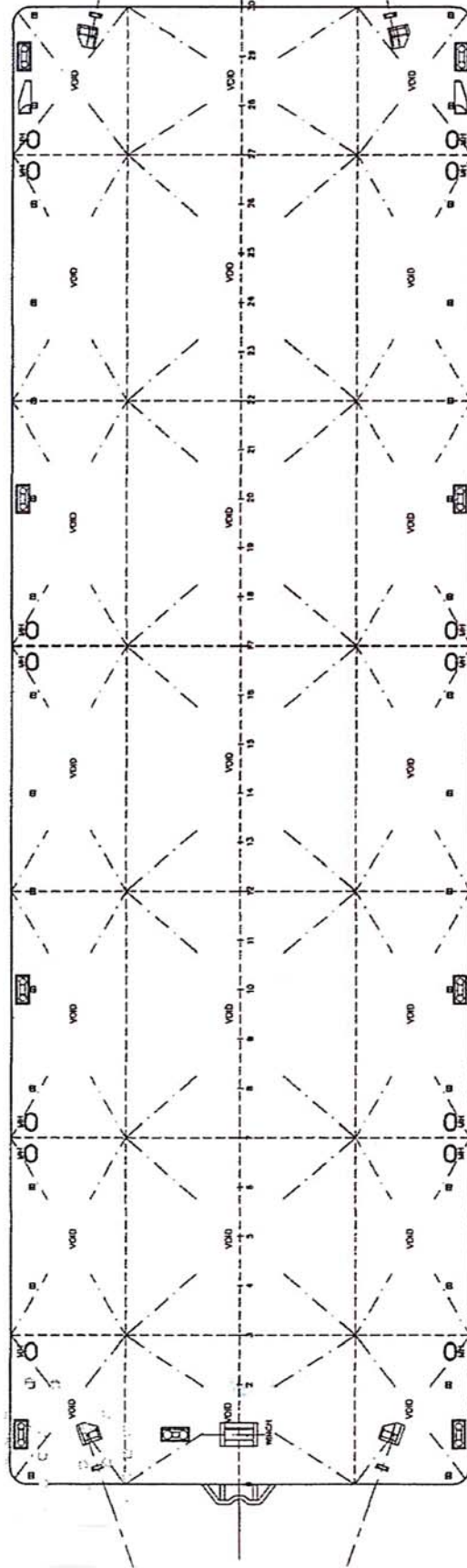
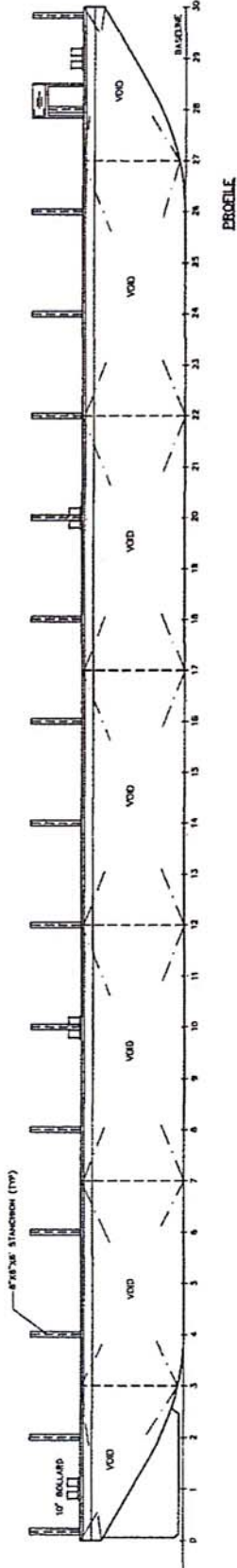


Barge Crest 181



Vessel Description	Flat top deck cargo / Construction Barge – 10T/m ² , flat swim end fwd, skegs aft. All steel construction.
Classification	Classification of Class – 100A5 Pontoon International Load Line Certificate Issued by Germanischer Lloyds. Certificate No: 113415 Expiry December 2015 Last survey certified by GL in May 2010
Official Number	858837
Flag	Australian
Owner	QPort Marine Services Pty Ltd – ABN: 26 089 549 977
Port of Registry	Brisbane
Built	April 2007, Batam
Additional Registrations	Registration No: 29074QB MSQ Registration; USL Classes 2B
Length	54.66m
Breadth	17.07m
Depth (light)	480mm
Carrying Capacity	2155 tonnes seagoing, 2400 tonnes S.W.
No. of Bulkheads	Twin Longitudinal 6 x Transverse
No. of Compartments	21 of 1 Manhole per Compartment – Flush to deck to Barge
Deck Equipment	<ul style="list-style-type: none"> - 10 tonne manual anchor winch - 800kg stockless anchor - Heavy duty tire fendering on double chain hangers- normally 16 per side - 32 total but as required - 4 sets of double bollards each side - Fwd and Aft Smit towing Brackets - Stanchion posts 200UC x 1.8m, 14 of per side – 28 total - 1 Stern access ladder



PRINCIPAL PARTICULARS
 LENGTH O.A. 180'
 BEAM 56'
 DEPTH 12'
 DECK LOADING 10t/m²

MAIN DECK

DATE	BY
SHIP	MODIFICATION
180' DECK CARGO BARGE	
GENERAL ARRANGEMENT	
DRAWN BY: PACIFIC CREST PTI LTD	
CHECKED BY: PACIFIC CREST PTI LTD	
APPROVED BY: PACIFIC CREST PTI LTD	
CLASS: S.A.	
CONAN WU & ASSOCIATES	
MARINE ENGINEERS	
100/100, WILSON ROAD, SUVA, FIJI	
DRAWN	CHECKED
DATE	DATE
28.01.07	
SCALE: 1/8" = 1'	
DRAWING NO. C 4145A/G-1	
REV. 0	